



# Welcome

## Nau Mai, Haere Mai

Greetings and welcome to Waimea College

At Waimea College we work hard to place our students at the centre of everything we do. Our co-educational college has all the advantages that come with being one of the South Island's largest secondary schools, yet we offer the warmth, encouragement and intimacy of a small school.

We strive to develop well-rounded, confident young adults who are equipped for our modern and changing world.

Our school has a culture where we do not rest until every student in our care is engaged and achieving. We believe that every student, every day, in every class deserves our very best effort and we strive to make sure that we live up to this expectation.

At Waimea College we are proud of our students, our staff and our facilities. We are also proud of our modern student-centred curriculum that is technology rich and responsive to the needs of our students.

Waimea College is a vibrant, and lively school. We know that student success can take many forms and all of these are valuable. Some will shine in the classroom, some on the sports field and some in the arts. An emphasis on holistic education ensures that students at Waimea College can discover and follow their passion to experience success in any field.

While providing outstanding academic education is our core business, our focus is also on developing strong citizens that will flourish in both the local community and on the world stage. Our graduates have a sense of community, and service and the ability to relate to and work with others, including those socially and culturally diverse.

We are proud that parents both locally and from around the world entrust us with the care and education of over 1620 teens every day. Our school works hard to meet the expectations and deliver upon the aspirations of our community. We aspire to be the school of choice for every family in our community.

We very much look forward to meeting each of you, to developing a successful partnership with you, and to working together in the common pursuit of success for every student.


Semper Contendite

Scott Haines  
Principal




### THE 'FIND OUT MORE' KEY:

Scan QR Code to go direct to the associated web page.

 /waimeacollege

 /waimea\_college

 Search Waimea College

 Search Waimea College





“ Being such a large school, Waimea College is able to provide many opportunities for students, whatever their interest may be. Students are exposed to a diversity of cultures, which enhances their world view. ”

JULIA, YEAR 12



## Our students

At Waimea College we recognise that every student is special and every student is different.

We also know that every student deserves nothing less than our very best efforts every hour of every day. We strive to develop well-rounded, confident young adults who are equipped for our modern and changing world. Our co-educational setting provides vibrant academic, co-curricular and extra-curricular opportunities and supports our young people, ensuring they are nurtured so they can reach their full potential.

While providing a world class academic education is our core business, our focus is also on instilling positive social values, and developing good human beings. In addition to our academic curriculum, significant emphasis is placed on a values-based approach to create young people with a sense of citizenship, community, and service. We strive to support the development of young people who relate to and work with others, including those who are socially and ethnically different. Our students are skilled and able to live and work in the real world to craft their own futures, as global citizens.

We also value student leadership. Our student leadership programme at Waimea College is widely acclaimed and grows the leaders of tomorrow.



FIND OUT MORE >    



be  
**ASPIRING** *kia ngākaunui*





*be* Ka whakarangatira  
**ENRICHED**



## Our curriculum

The curriculum at Waimea College is extensive, enabling our students to individualize their own learning and so provide opportunities for them to expand their vision and enjoy success. This helps them to develop positive attitudes that will encourage further study, training and life-long learning.

At the junior level there are several compulsory subjects from the eight learning areas of the New Zealand Curriculum. In addition, students can select from a range of option and enrichment subjects. Enrichment subjects offer cross-curriculum opportunities featuring 21st century learning and focusing on the key competencies.

The College offers all students:

- a comprehensive range of subjects from Year 9 to 13 leading to the National Certificate of Educational Achievement (NCEA) Levels 1, 2 and 3
- a 21st century curriculum that is engaging and responsive to students' needs
- a comprehensive range of senior subjects including Trades Academy and Vocational Pathway options
- a technology rich curriculum delivery including BYOD (Bring Your Own Device)
- additional opportunities to accelerate and extend any special abilities in a range of curriculum areas
- in need of additional assistance with their learning, specialized support through our student support network.

“ As a Year 12 student at Waimea College, I think the curriculum offered encourages students to excel academically across a comprehensive range of subjects. Waimea College also promotes additional assistance and specialised support through its student support network. ”

TEVIN, YEAR 12

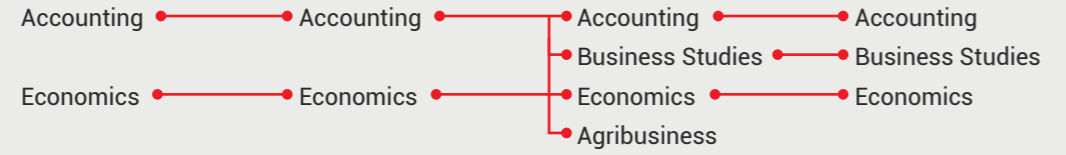


FIND OUT MORE >    

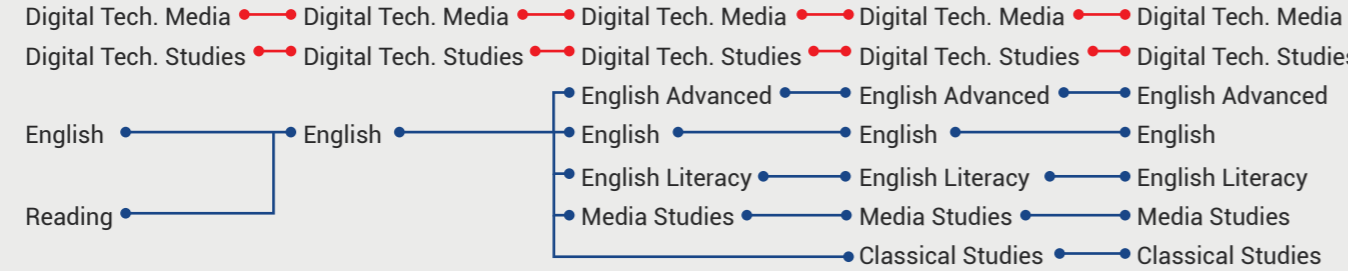


**YEAR 9      YEAR 10      LEVEL 1      LEVEL 2      LEVEL 3**

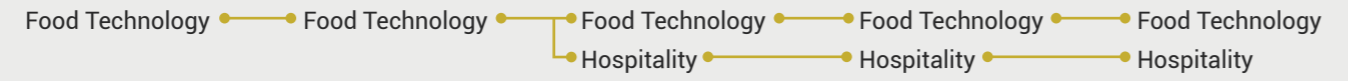
**BUSINESS**



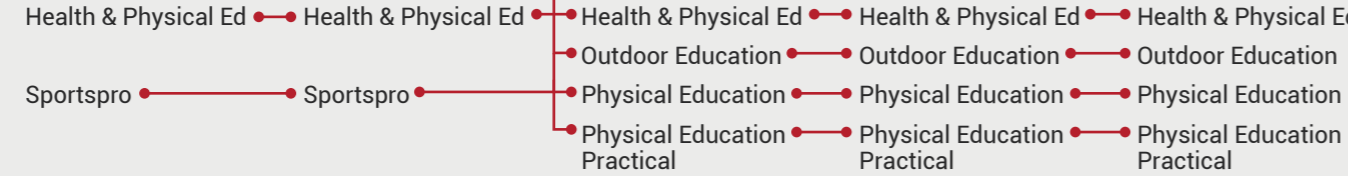
**ENGLISH**



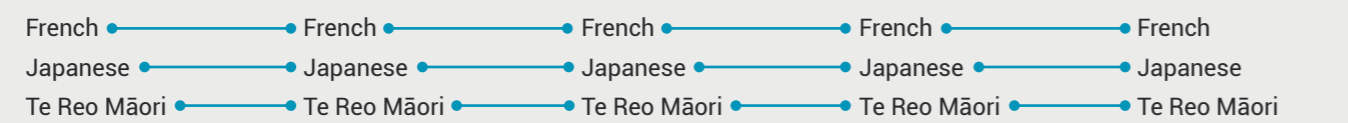
**FOOD TECHNOLOGY**



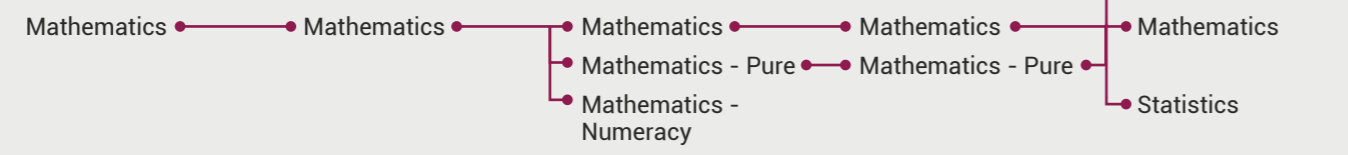
**HEALTH & PHYSICAL EDUCATION**



**LANGUAGES**

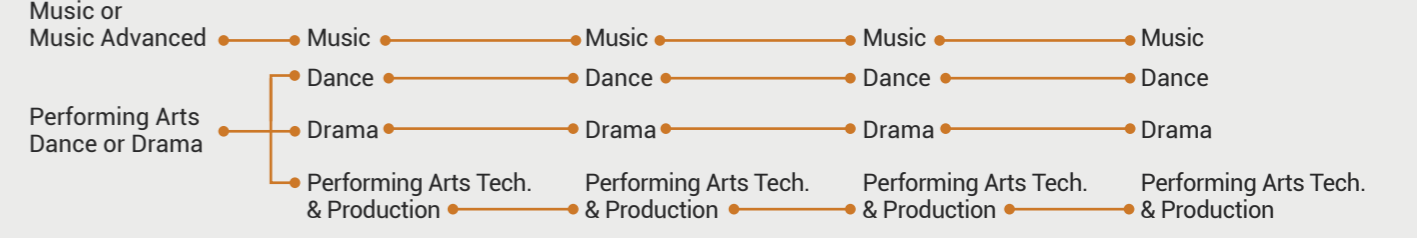


**MATHEMATICS & STATISTICS**

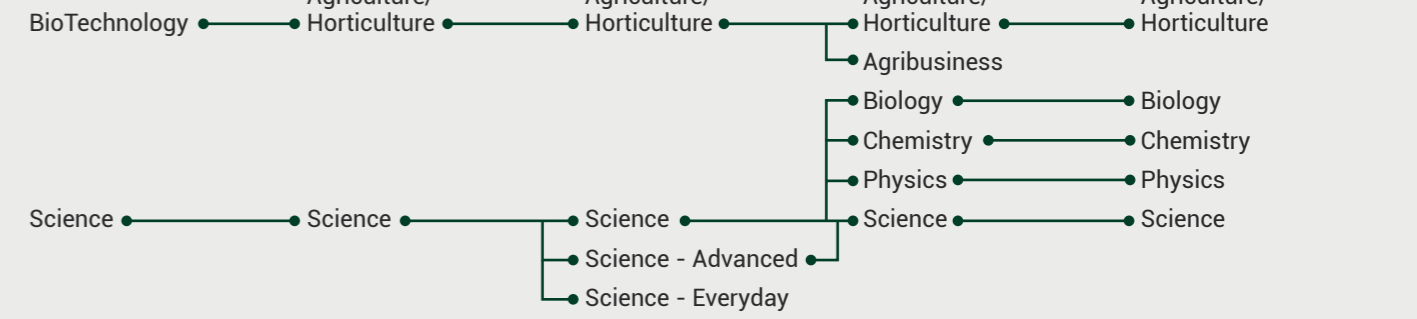


**YEAR 9      YEAR 10      LEVEL 1      LEVEL 2      LEVEL 3**

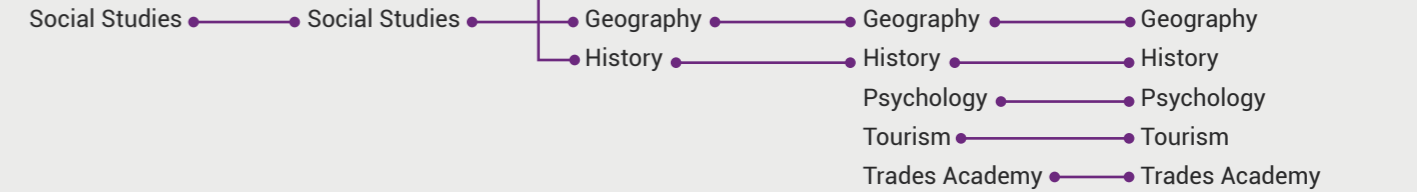
**PERFORMING ARTS**



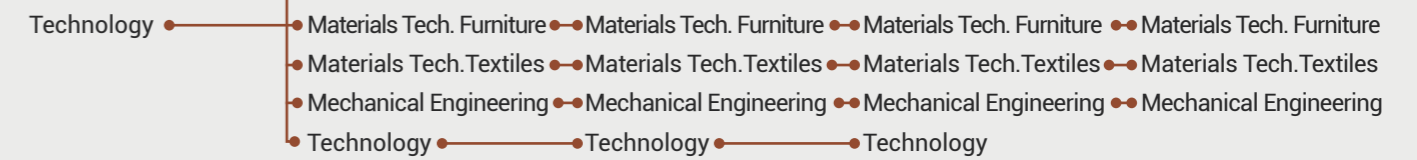
**SCIENCE**



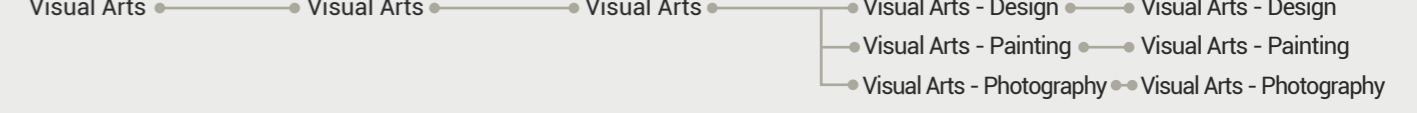
**SOCIAL SCIENCES**



**TECHNOLOGY**



**VISUAL ARTS**





“Students at Waimea College really excel because there is so much on offer. The teachers here love to help and want all students to do their best. Surrounding ourselves in this environment makes us want to achieve to our full potential.”

FINN, YEAR 12



## Our achievements

We are proud of our students, their positive attitudes and of what they achieve. Many of our students go on to have outstanding success beyond school. The College acknowledges that student success can take many forms and celebrates student achievements in a variety of ways. These include school assemblies, newsletters and special prizegiving ceremonies that recognise academic attainment, leadership, service to others, and success in sporting and cultural activities.

Waimea College students have a very good record of success in:

- national and international academic qualifications
- national and international sporting competitions
- national and international, music and performing arts competitions.



FIND OUT MORE >    





be  
INSPIRED

kia whakawātea

## Leadership & opportunities

Creating future leaders and providing leadership opportunities are recognised strengths at Waimea College. Opportunities exist in Year 10 as well as in the senior school. The Student Leadership Team is led by an elected representative to the Board of Trustees, six Head Students and eight House Captains. The variety of other leadership positions include:

- Academic
- Business
- Community
- Culture
- Diversity
- Environment
- Events
- International Student Support
- Performing Arts
- Sport
- Student Ambassadors
- Student Council
- Visual Arts

Students have the opportunity to be involved and to participate in community activities such as ANZAC Day, Big Brother Big Sisters at local primary and intermediate schools, wheelchair dancing, tea & tech with AgeConnect and Special Education events. These all help shape the leaders of tomorrow.

So be inspired...

FIND OUT MORE > [f](#) [@](#) [v](#) [You Tube](#)



“*Waimea College offers students many great opportunities. Waimea is very lucky to have amazing leaders both senior and junior. I have been lucky enough to be involved in many leadership activities including being a Junior Leader for Waimea College.*”

ELLIE, YEAR 11





“ You should want a school to demand high expectations of their students so that the students can rise to the challenge and be the best they can be. Waimea College is the place that gives us that challenge. ”

EMMA, YEAR 12



## Our expectations

At Waimea College we encourage our students and staff to be legendary. We do this by:

- fostering a culture of academic and all-round excellence
- having our students and staff aim high in all that they do
- students and staff taking responsibility for their own learning
- creating a sense of community, collegiality and pride
- preparing students for the future that is yet to be written.



*be*  
**LEGENDARY**  
kia pūrākau

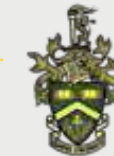
FIND OUT MORE >





*be*  
**CONNECTED**

*kia hono*



## Our performing arts & culture

Performing arts and culture are important to us. Our students are offered a wonderful array of extra opportunities to support the curriculum both in subject areas and to ensure the development of key competencies.

We actively encourage our students to take advantage of a large number of opportunities through:

- students participating in a range of performing arts and cultural activities
- participating in Theatre Sports, Shakespeare Festivals, competitive drama, performance music, public speaking, and creative design competitions
- learning a variety of musical instruments as part of the itinerant music tuition programme
- students being able to participate in Māori Culture through Tama Tū Tama Ora, Ngā Manu Kōrero, Te Rourou Kura and other available events
- participation in a range of multi-cultural events.

“*Waimea College has a wide variety of cultural and performance opportunities available. There are many things to join and be a part of so make sure to get involved in as much as possible.*”

TYNAN, YEAR 12



FIND OUT MORE >    





“ *Waimea College offers a wide selection of sporting codes ranging from Football to Underwater Hockey. There are many opportunities to play on a social or competitive level while getting some of the best coaching the region has to offer. No matter what your prior experience may be, Waimea College has a team for you.* ”

LUIS, YEAR 11

## Our sports

All students are encouraged to participate in a variety of sports at either competitive or social levels. We have more than 40 sporting codes on offer. These include the major sports of Basketball, Cricket, Football, Netball, Rugby, Volleyball and Multisport.

Waimea College has an excellent record of achievement at regional and national level in a number of sports and is represented by teams and individuals in many codes.

Our achievements in sport are the result of skilled coaching and management by staff, parents, past students and members of the wider community who support the students with expertise, energy and enthusiasm.

In recent years, we have celebrated success in a number of sporting codes, including:

- Junior Get2Go National champions (Adventure Racing) - 2018
- Placed 3rd SISS Mixed Touch Team - 2019
- MAADI Rowing Nationals finalists - 2019
- Top 20 Division 1 Senior Boys Volleyball - 2019

- Placed 2nd Hillary Challenge Adventure Racing – 2018
- Girls Tennis SISS and Nationals team representation – 2019
- Placed 5th Junior Nationals Underwater Hockey - 2018
- Senior Girls & Boys Basketball SISS and Nationals qualification and representation – 2018.

So be fearless - if you can dream it - you can do it here at Waimea!

FIND OUT MORE >    



*be* **FEARLESS** *kia mātātoa*



*be*  
**INVOLVED**

*Kia Kūtorotia*



## Extra-curricular

The College prides itself on offering a range of extra-curricular activities including:

- |                       |   |                      |
|-----------------------|---|----------------------|
| Athletics             | ICAS English Competition                  | Shakespeare Festival |
| Badminton             | Instrumental Lessons                      | Ski Team             |
| Basketball            | International Student Buddies             | Softball             |
| Book Club             | Jazz Band                                 | Speech Competition   |
| Chess Club            | Junior Leader Programme                   | Spelling Bee         |
| Choir                 | Kapa Haka                                 | Squash               |
| Creative Writing      | Lawn Bowls                                | Student Council      |
| Cricket               | Mountain Biking                           | Study Club           |
| Cross Country         | Multisport                                | Swimming             |
| Dancing               | Netball                                   | Tama Tū Tama Ora     |
| Debating              | Ngā Manu Kōrero Māori Speech Competitions | Te Rourou Kura       |
| Drama                 | Orchestra                                 | Tennis               |
| Duke of Edinburgh     | Road Cycling                              | Theatre Sports       |
| Environment Committee | Rock Bands                                | Touch Rugby          |
| Football              | Rock Climbing                             | Triathlon            |
| Get2Go                | Rugby                                     | Volleyball           |
| Golf                  | Sailing                                   | World Challenge      |
| Hillary Challenge     | School Production                         | ... and more.        |
| Hockey                |   |                      |

FIND OUT MORE >    



“ Here at Waimea College you always feel supported by those around you, especially the teachers. You are encouraged to get involved with school work, the arts, sports, and House events. The Deans, teachers and other staff are supporting and encouraging and do a superb job at making you feel special. ”

THEO, YEAR 12

## Student well-being

Waimea College has established an excellent reputation for its commitment to student support provided by Teachers, Deans, Guidance and Support staff. Our aim is to create students who are resilient and who are able to cope well with the demands of the modern world, but at the same time retaining their natural curiosity and creativity. Every student has the opportunity to receive guidance to plan their course of study, set short and long-term goals and receive assistance in achieving them. The College adopts a firm, fair and consistent approach to managing students' behaviour, within a framework of Restorative Practice and respect for others.

The following are key features of our support network:

- each student belongs to one of four Houses: Cooper, Hillary, Rutherford and Sheppard
- the Houses are divided into a number of Form Groups
- the Form Teacher and Deans are responsible for each student's pastoral care
- the Deans follow each year group for all of their five years at Waimea College to provide consistent support throughout this time
- a well-resourced Guidance and Learning Centre where fully trained counsellors and access to some health services is available for those students requiring additional support
- 24/7 Youth Workers.



FIND OUT MORE >    



be SUPPORTED

kia tautokona



*be*  
**WELCOMED**  
kia pōwhiritia

## International

Waimea College offers not just an education but a whole new lifestyle! When you study at our College you will have opportunities to take part in a wide range of sports and cultural activities while still focusing on your academic studies. We work hard to produce well-rounded global citizens!

At Waimea College we are proud of our richly diverse student body and we warmly welcome International students from around the world. Our students come from a wide range of countries that include Austria, Brazil, Chile, China, Czech Republic, Denmark, France, Germany, Hong Kong, Japan, Macau, Norway, Switzerland, Thailand, Taiwan and Vietnam amongst others.

International students are mainstreamed into regular classes with local students. They can choose from a wide range of subjects and are able to mix with a variety of other students.

Our International programme provides:

- experienced and committed staff dedicated to supporting our International students

- the opportunity for a world class education, including incredible outdoor education experiences
- specialist ESOL support classes from elementary to upper intermediate
- a safe environment which allows our International students to reach their full potential
- a wide range of sporting, cultural and recreational activities
- support for students to have an amazing experience in another country, while excelling academically and learning about yourself.

Our International students live with families in the Waimea College area. These families are carefully selected by our dedicated and experienced homestay staff, who regularly interview students and families.

“*Waimea College has a very welcoming and accepting environment for students of all cultures, countries and paths of life, and because of this I am now on my 5th year of attending.*”

HOWARD, YEAR 13



FIND OUT MORE >    



“An enjoyable opportunity to learn and practise outdoor skills that can be applied in our beautiful New Zealand environment.”

JACK, YEAR 12



## Outdoor Education

The Tasman region is an adventure-seekers paradise and provides an incredible classroom for our students to experience exhilarating outdoor activities through our Outdoor Education programme.

Students in Year 11, 12 and 13 can participate in a range of outdoor pursuits such as kayaking, rock-climbing, tramping, alpine skills and mountain biking.

Year 9 students have the opportunity to attend camps in our great outdoors. The focus of the camps is personal challenge whilst working as a team and includes activities such as tramping, rafting, canoeing or kayaking and a confidence course.

Special Education and International students can also experience Outdoor Education activities.

Waimea College's membership of Outdoor Education New Zealand underpins our commitment to outstanding educational opportunities outside the classroom where safety is paramount.

So ..... let's be adventurous!



*be*  
**ADVENTUROUS**

*kia hīkaka*

FIND OUT MORE >





*be*  
**SECURE** *kia nawenawe*

## Our campus

Be secure in our large, attractive, park-like grounds that border a local primary and intermediate school. The school has excellent facilities that support all requirements of 21st century learning. Considerable emphasis is placed on ensuring that our classrooms are stimulating, well-managed environments and support the work of great teachers.

Our facilities include:

- large hard-court areas for ball games
- spacious outdoor fields
- a campus-wide wifi freely available for student use
- well-resourced science laboratories
- modern learning environments
- an excellent and newly refurbished music and performing arts environment
- a spacious, modern Library and Information Centre
- a newly modernised Technology Centre
- two fully-equipped gymnasiums and a weights room
- a solar-heated swimming pool
- an extensive Guidance and Learning Support Centre
- a dedicated International Centre
- a large and centrally located Special Education Facility.

“ We are fortunate to have a beautiful campus with a magnificent backdrop of hills and trees, with large spacious areas for recreation. The park-like grounds make you feel relaxed and happy to be here. ”

RAHERA, YEAR 11



FIND OUT MORE >    



“ Our community provides a safe environment for our students and staff to enhance all aspects of their well-being. ”

JED, YEAR 12



## Our community

Waimea College students have a strong sense of pride, loyalty and respect for their school. Community service undertaken by both Junior and Senior students is valued.

Features of our community include:

- a strong sense of belonging
- a myriad of opportunities to engage through activities
- strong links with our contributing schools
- connection with alumni
- strong links and support with our Māori community
- active parent support groups such as PTA and Rūnanga Mātua.

So ..... be strengthened – join our community!



FIND OUT MORE >    



*be*  
**STRENGTHENED**  
kia whakakahaina



# 60 YEARS

Waimea College has been a part of the Richmond community for the past 60 years. We are proud of our history. Our school culture today reflects the traditional values of citizenship, community spirit, honesty, integrity and a strong work ethic. This is blended with the 21st Century curriculum along with a modern learning environment and the latest teaching techniques.

Waimea College officially opened on Tuesday 5 February 1957 when 200 boys and girls attended. The teaching staff included nine full-time staff with part-time staff for Music and Home Science. A large crowd attended the opening of the new college. Hon. R M Algie congratulates the first enrolled pupil, Andrew Tait.

School cadets, involving just the boys in military activities, was a big feature of the school in the early days and cadet camps took place at Rotoiti.

In the early 1970s, student drivers were a minority – between half-a-dozen to a dozen cars might be driven to and from school each day.

Pupils were expected to wear their uniform correctly, which over the years has transpired from bottle green pinafores and Panama hats to the kilt we recognise today.

In 2019, the College commenced with over 1620 students and over 200 staff.



1957 - 1972

Dr F. E. Gallas



1973 - 1981

David Briasco



1981 - 1989

Peter Price



1989 - 2002

Rob McMurray



2002 - 2014

Larry Ching



2015 - Current

Scott Haines



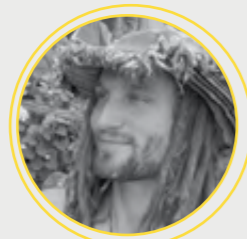


# Alumni Creating Future Leaders



1998 - 2000

Dr. Lee Bint  
Sustainability Framework  
Manager, New Zealand  
Defence Force



2006 - 2010

Floyd Thomas  
Geo Tech Engineer



2006 - 2010

Dr. Georgia Brownlee  
Medical Physician



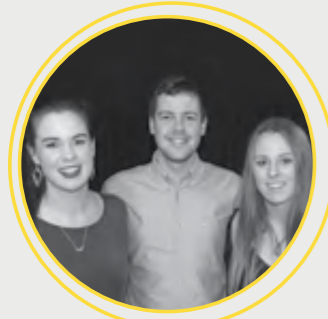
2013 - 2017

Bridie Edwards  
Athletics Scholarship at  
Stony Brook University,  
Long Island, USA



2001 - 2005

Anita McLaren (nee Punt)  
Commonwealth Games  
Gold Medalist, New Zealand  
Black Sticks



2007 through 2014

Alice, Hugh and  
Bridget Knight  
Former Head Students



2004 - 2008

Eleanor Hunt  
Journalist,  
The Guardian



2006 - 2010

Aaron Clements  
Electrical  
Engineering  
Research Assistant



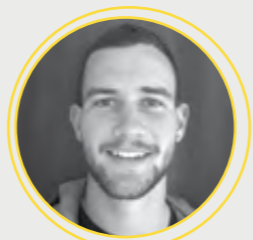
2008 - 2012

Kelsey Smith  
Commonwealth Games  
Gold Medalist, New Zealand  
Black Sticks



2002 - 2006

Jessie Watts  
Joint Dux - 2006,  
Mathematics Teacher,  
Waimea College



2006 - 2010

Patrick Smith  
High Country Farm  
Manager & BA in Teaching



Waimea College  
60 Salisbury Road  
Richmond, 7020  
Nelson

New Zealand

Phone: +64 3 544 6099

Email: [enrolments@waimea.school.nz](mailto:enrolments@waimea.school.nz)

Web: [www.waimea.school.nz](http://www.waimea.school.nz)

FIND OUT MORE >

